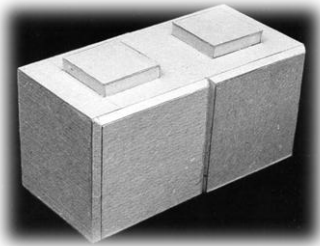


## KALMATRON® KF-JET Setting & Hardening time of Cement Controlling Additive

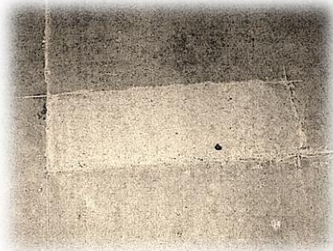
KALMATRON® KF-Jet designed as a cement setting time controlling agent:

- as a premix to the dry Ordinary Portland Cement (OPC) for production of Rapid Set Cement (RSC) and Fast Setting Cement (FSC) with controlled setting time;
- as an additive to the concrete mortar and grouts to get fast casting, rapid grouting, and patching.

**FAST CAST**



**FAST ROAD PATCH**



**RAPID ROCK GROUTING**



**QUICK SAND STABILIZATION**



### ❑ DIFFERENCE FROM KNOWN

Concrete and grout has no shrinkage/dilatation cracks/gaps, high strength, abrasion resistance and impermeability to the liquids.

### ❑ NEW ECONOMY

This is an opportunity to be independent from suppliers of Rapid/Fast Set Cements by application of KALMATRON® KF-Jet even on a job side.

### ❑ VARIETY OF KF-Jet APPLICATION per 1000 Kg of OPC



BRAND	KF-JET Kilograms	SET TIME Minutes	W/C RATIO	TYPE OF APPLICATION
Quick Set	10	10 ÷ 20	0.49 ÷ 0.58	Rail road bed; Runaway & Roads, injection & emergency repair, etc.
Fast Set	15	5 ÷ 10	0.46 ÷ 0.65	Foundation sinkhole; Blocking of cracking; Soil Stabilization, etc.
Rapid Set	20	3 ÷ 5	0.42 ÷ 0.48	Pressured dam leaks; Leveling of water table; Traffic emergency , etc.

Also stabilization of sandy areas, restoration of eroded shores, roads rainy slops, shielding of caves and tunnels, and unstable Earth made structures are repairable by KALMATRON® KF-Jet.

